

PROJECT / INTERPRETIVE MAP

2006 Reconnaissance (1:20,000) Fish and Fish Habitat Inventory
Follow-up Sampling of
Selected Inlet Streams to Babine Lake
Watershed Code: 480-000000
Babine Lake (BABL) Watershed Group

Houston Forest Products,
a division of
West Fraser Mills Ltd
Nadina Forest District

Scale 1:20,000

Map 2 of 5 Mapsheet: 093M.009

Projection: UTM Zone 9 Datum: NAD 83 Contour Interval: 20m
FIA Project Number: 2532003 Date: March 2007

Inventory and Mapping by: **FINS Consulting Ltd.**

Printed in Canada

Site Data/Reach Summary Symbol Combined

Fish Code (s) NEC (RB) 3-2.5-RPC-D1D2 I (S3) (SKR10) Denotes Interfered Information

Reach Summary Symbol

Fish Code (s) NEC (RB) 3-2.51 (S3) (SKR10) Denotes Interfered Information

Lake Summary Symbol

Fish Code (s) LKC RB Denotes Interfered Information

Stream Classifications

- Confirmed Fish Presence: S1 - S4
- Suspected Fish Presence: (S1) - (S4)
- Suspected Fish Absence: (S5) - (S6)
- Confirmed Fish Absence: S5 - S6
- Non Classified Drainage: NCD

2006 Features

- Base Map Anomaly
- Cascade
- Dewatering
- Disappearing Point
- Velocity Barrier

Historic Features

- Cascade
- Culvert
- Debris jam
- Dewatering
- Disappearing Point
- Falls

Other Features

- Wetlands
- Lakes
- Other Streams
- Contours
- Project Area Boundary
- Mapsheet Outline
- Roads

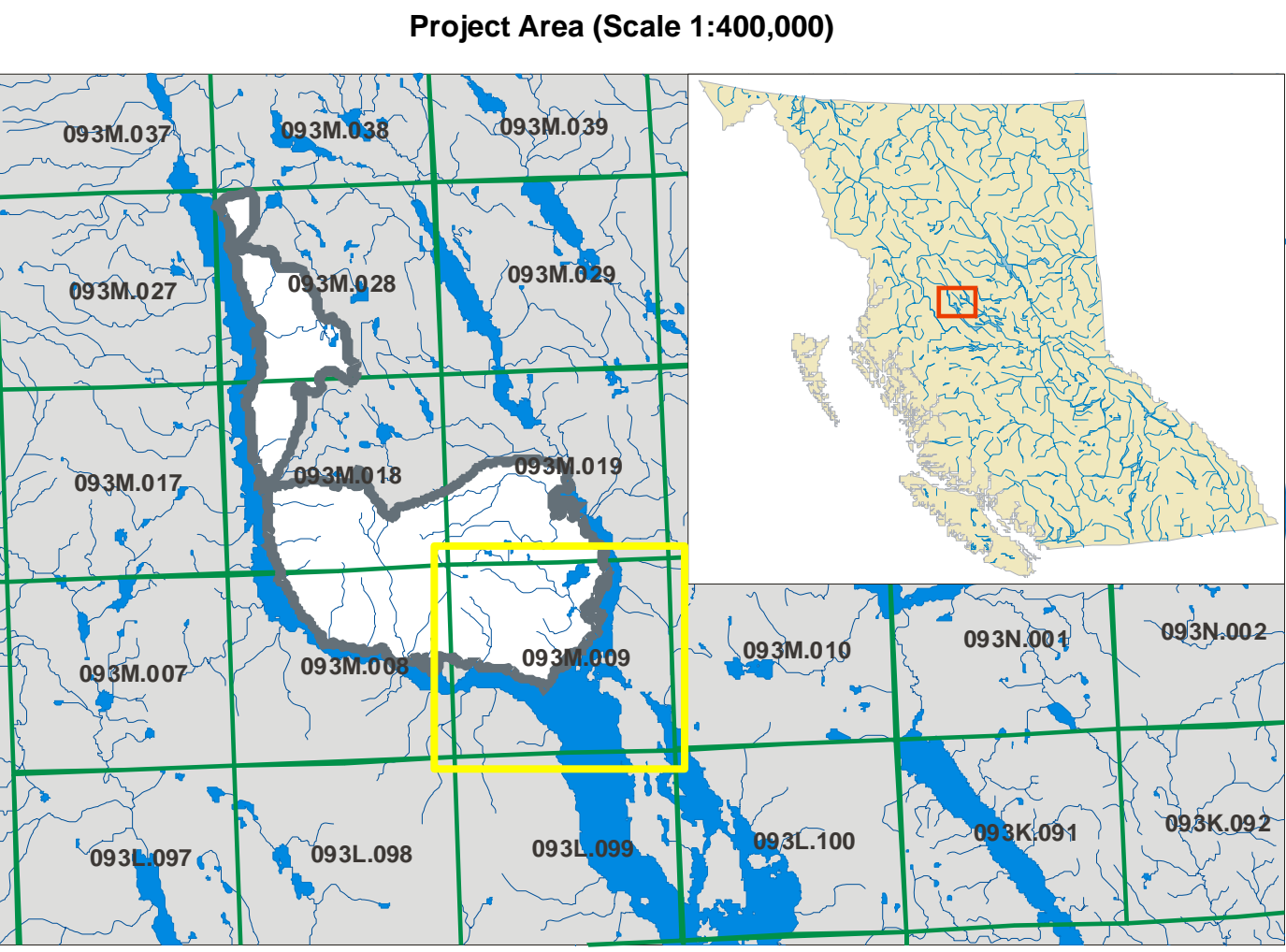
FISS Points

- Salmon Observation
- Spot Fish Observation
- Other Species Observation

Fish Species							
CODE	COMMON NAME	CODE	COMMON NAME	CODE	COMMON NAME	CODE	COMMON NAME
CAS	Prickly sculpin	CT	Cutthroat trout	MW	Mountain whitefish	PCC	Peanmouth chub
CC	Sculpin	DV	Dolly Varden char	NFC	No Fish Captured	RB	Rainbow trout
CH	Chinook salmon	LKC	Lake chub	NS	Not Sampled	SK	Sockeye salmon
CO	Coho salmon	LNC	Longnose dace	NSC	Northern pike minnow	SP	Species (unidentified)

Disturbance Indicators				Substrate	
CODE	DESCRIPTION	CODE	DESCRIPTION	CODE	CLASS
B1	Abandoned channels	D1	Small woody debris	f	finer
B2	Eroding banks	D2	Large woody debris	g	gravels
C1	Extensive riffles or cascades	O1	Beaver dams	c	cobbles
C2	Minimal pool area	S3	Sediment wedges	b	boulders
C4	Multiple channels or braids			r	rock

Channel Morphology	
CODE	DESCRIPTION
CP	Cascade-pool
CPCW	Cascade-pool with cobbles and functioning LWD
LC	Large channel
NS	Not specified
RP	Riffle-pool
RPGW	Riffle-pool with gravels and functioning LWD
SP	Step-pool



Disclaimer

This product has been accepted as being in accordance with approved standards within the limits of Ministry quality assurance procedures. The Province reserves the right to dispute the validity of summarized results.

User Note

The reach riparian classifications reflect only the site data and do not represent the entire reach. Specific information can be obtained from the listed reports, which are referenced in parenthesis to the site information.

Source Information

BASE: TR, OTH
STR SYM: INV, SS
LK SYM: SS
LOC: FDG
HAB: INV, SS
FISH: INV, SS
DATE INV: 2006/07/01 - 2006/08/01
INV MGMT: MOE

Previous Inventory References			
Reference Code	Report	Reference Code	Report
SKR1	SKR 1997. Aquatic stream inventory in the Morrison RM (see CP 527.1, CP 535.3, CP 540.1.2.3, CP 555.1.2.3. Unpublished report prepared for Houston Forest Products Co., Houston, B.C.	SKR11	SKR 2000. Reconnaissance (1:20K) FFH of selected inlet streams to Babine Lake Watershed Code: 480-000000. Unpublished report prepared for Houston Forest Products Co., Houston, B.C.
SKR2	SKR 1998. FFH for operational areas: Three Babine L. inlet streams and Morrison C. tributary in the Morrison LU. CP 528.1.2.4, 3000 Rf Extension and West Arm of 3000 Rf. Unpublished report prepared for Houston Forest Products Co., Houston, B.C.	SKR12	SKR 2000. Information for streams 5 and 6 adjacent to CP 545.1 in the Morrison LU. Letter to David Dwyer (HFP) dated Oct 18, 2001 prepared for Houston Forest Products Co., Houston, B.C.
SKR3	SKR 1998. FFH for operational areas: Babine L. inlet streams and tributary to Morrison C. in the Morrison LU. CP 528.1.2.4, 3000 Rf Extension and West Arm of 3000 Rf. Unpublished report prepared for Houston Forest Products Co., Houston, B.C.	SKR13	SKR 2000. Stream assessments for CP 509 in the Morrison LU. Letter to Natasha Esser (HFP) dated July 20, 2001 prepared for Houston Forest Products Co., Houston, B.C.
SKR4	SKR 2000. Reconnaissance (1:20K) FFH of six sub-basins in the Morrison C. Watershed. Watershed Code: 480-000000. Unpublished report prepared for Houston Forest Products Co., Houston, B.C.	SKR14	SKR 2000. Stream assessments for CP 546 in the Morrison LU. Letter to David Dwyer (HFP) dated Aug 27, 2002 prepared for Houston Forest Products Co., Houston, B.C.
SKR5	SKR 1998. FFH for operational areas: Babine L. inlet streams and tributary to Morrison C. in the Morrison LU. CP 528.1.2.4, 3000 Rf Extension and West Arm of 3000 Rf. Unpublished report prepared for Houston Forest Products Co., Houston, B.C.	SKR15	SKR 2000. Stream assessments for streams 5 and 6 adjacent to CP 545.1 in the Morrison LU. Letter to David Dwyer (HFP) dated Oct 18, 2001 prepared for Houston Forest Products Co., Houston, B.C.
SKR6	SKR 1998. Operational FFH of inlet streams to Babine L. Watershed Code: 480-000000. Unpublished report prepared for Houston Forest Products Co., Houston, B.C.	SKR16	SKR 2000. Stream assessments for streams 5 and 6 adjacent to CP 544 in the Morrison LU. Letter to David Dwyer (HFP) dated Aug 27, 2002 prepared for Houston Forest Products Co., Houston, B.C.
SKR7	SKR 1998. Operational FFH of inlet streams to Babine L. Watershed Code: 480-000000. Unpublished report prepared for Houston Forest Products Co., Houston, B.C.	SKR17	SKR 2000. Stream assessments for streams 5 and 6 adjacent to CP 544 in the Morrison LU. Letter to David Dwyer (HFP) dated Aug 27, 2002 prepared for Houston Forest Products Co., Houston, B.C.
SKR8	SKR 1998. Operational FFH of inlet streams to Babine L. Watershed Code: 480-000000. Unpublished report prepared for Houston Forest Products Co., Houston, B.C.	SKR18	SKR 2000. Stream assessments for streams 5 and 6 adjacent to CP 544 in the Morrison LU. Letter to David Dwyer (HFP) dated Aug 27, 2002 prepared for Houston Forest Products Co., Houston, B.C.
SKR9	SKR 1998. Operational FFH of inlet streams to Babine L. Watershed Code: 480-000000. Unpublished report prepared for Houston Forest Products Co., Houston, B.C.	SKR19	SKR 2000. Stream assessments for streams 5 and 6 adjacent to CP 544 in the Morrison LU. Letter to David Dwyer (HFP) dated Aug 27, 2002 prepared for Houston Forest Products Co., Houston, B.C.
SKR10	SKR 1998. Operational FFH of inlet streams to Babine L. Watershed Code: 480-000000. Unpublished report prepared for Houston Forest Products Co., Houston, B.C.	SKR20	SKR 2000. Stream assessments for streams 5 and 6 adjacent to CP 544 in the Morrison LU. Letter to David Dwyer (HFP) dated Aug 27, 2002 prepared for Houston Forest Products Co., Houston, B.C.